



# LONG TERM RECOVERY PLANNING

Panama City, Florida

## Teaming Partners Overview

A highly qualified and dynamic team of professionals have been assembled to guide Panama City through its storm recovery, redevelopment, renewal of public spaces, and path to economic innovation.

### Hagerty Consulting

*Specializing in disaster preparedness, response, and recovery across the country.*

#### Long Term Recovery Planning

- **Hurricane Michael Recovery Action Plan**  
Establishing strategies and tactics to recover from Michael, including a framework to increase the City's overall resilience and a resourcing plan to enact recovery milestones.
- **Pre-Disaster Recovery Plan**  
Creating a new recovery plan for the City that unifies government partners, the community, and needed resources for effective recovery from future disasters.
- **Redevelopment Plan Update**  
Refreshing the City's 2008 Redevelopment plan's vision for the community to reflect recent progress, new priorities from the long term recovery planning process, and a roadmap for community resilience.

#### Unmet Needs Assessment

- **Unmet Needs Assessment**  
Identifying storm impact gaps, costs, and community goals not addressed through initial disaster funding streams as informed by Panama City's 2018 Guiding Principles document; HUD's definition of Unmet Needs, and FEMA's National Disaster Recovery Framework (NDRF) identified functional areas (Recovery Support Functions, RSFs).

### HR&A Advisors

*Specializing in real estate, economic development, and program design and implementation.*

#### Economic Development Plan

- **Comprehensive Economic Development Plan**  
Developing a comprehensive economic development plan that meets the needs of the whole community to attract new business, increase quality of life, and build on existing strengths and key partners to grow the City's economic environment beyond pre-storm conditions.

#### Economic Impact Assessment

- **Impact Assessment**  
Quantifying indirect and induced storm costs through pre-storm economic data analysis and impact modeling to understand the effects of post-storm conditions on employment, residential displacement, business loss, and anticipated reductions in revenue.

### Dover-Kohl & Partners

*Specializing in revitalizing traditional towns, building great new places, growing neighborhoods, and fixing sprawl — by design.*

#### Master Plan

- **Comprehensive Strategic Master Plan**  
Developing a new Downtown Panama City & Waterfront Strategic Master Plan that reflects the vision of the City, its residents, business owners, and visitors. Dover-Kohl employs a proven methodology that supports genuine public participation and will produce a detailed plan for the City, plus a toolkit to make it happen.

### Kglobal









*Specializing in communications, public relations, and public affairs.*

#### Communications

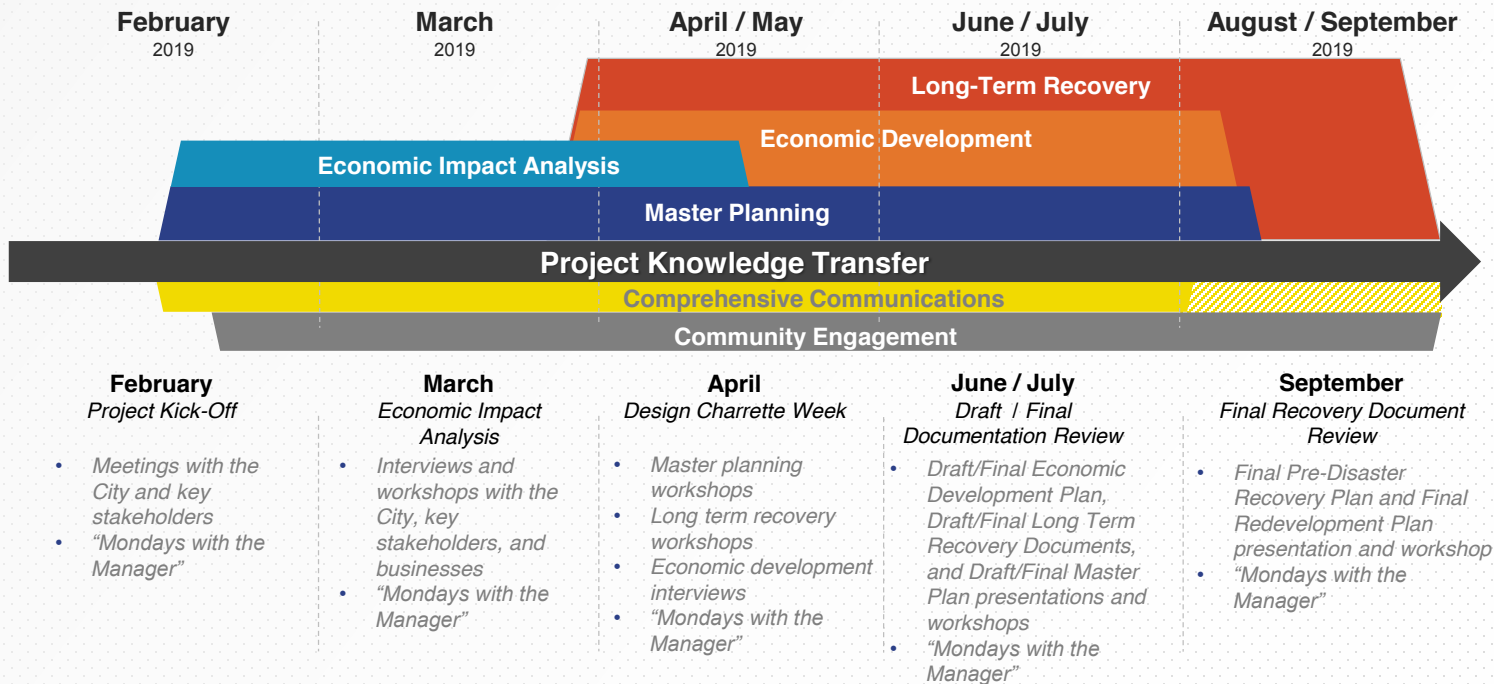
- **Comprehensive Communications and Engagement**  
Providing communication pathways and strategies to tell the story of Hurricane Michael and its aftermath; sharing the redevelopment and recovery efforts working towards a better, stronger Panama City; and delivering messaging sharing the future vision of the City.

# Tasks and Deliverables

This five-task, eight-month long term recovery planning initiative will move fast, learn from the City's leaders, businesses, and community members and will allow initial, rigorous work to critically inform later tasks. Hagerty, HR&A Advisors, Dover Kohl and Partners, and Kglobal will work collaboratively, merging specializations and thoughtfully engaging the community as one team. Following below is the task, team, and deliverables structure; project timeline; and engagement strategy.

TEAM(S)			TASK	DELIVERABLES	COSTS
	HRA	DK&P	 <b>Task 1:</b> Hurricane Michael Impact Analysis, Long Term Recovery Planning Framework, and Project Management	<ul style="list-style-type: none"> <li>Long Term Recovery Framework</li> <li>Comprehensive Project Management Plan and Engagement Strategy</li> <li>Impact Assessment Report</li> <li>Unmet Needs Annex</li> </ul>	<b>\$101,600</b>
			 <b>Task 2:</b> Long-term Recovery Planning	<ul style="list-style-type: none"> <li>Hurricane Michael Recovery Action and Resourcing Plan</li> <li>Pre-Disaster Recovery Plan</li> <li>Redevelopment Plan Update</li> </ul>	<b>\$305,700</b>
	HRA		 <b>Task 3:</b> Economic Development Plan	<ul style="list-style-type: none"> <li>Economic Development Plan</li> </ul>	<b>\$414,900</b>
		DK&P	 <b>Task 4:</b> Master Plan	<ul style="list-style-type: none"> <li>Downtown Panama City and Waterfront Strategic Master Plan</li> </ul>	<b>\$463,500</b>
	HRA	DK&P	 <b>Task 5:</b> Community Engagement	<ul style="list-style-type: none"> <li>Workshops, Town Halls, Focus Groups, Community Design Studios, communications strategies, and updates through "Mondays with the Manager"</li> </ul>	<b>\$88,900</b>
<b>Estimated Total</b>					<b>\$1,374,600</b>

## Project Workflow Evolution



## Learn More:

For more information on the teams prepared to support Panama City's recovery, renewal, and growth, please contact:



**Mark O'Mara**  
**Director of Recovery**  
[mark.omara@hagertyconsulting.com](mailto:mark.omara@hagertyconsulting.com)

[www.hagertyconsulting.com](http://www.hagertyconsulting.com)

[www.hraadvisors.com](http://www.hraadvisors.com)

[www.doverkohl.com](http://www.doverkohl.com)

[www.kglobal.com](http://www.kglobal.com)